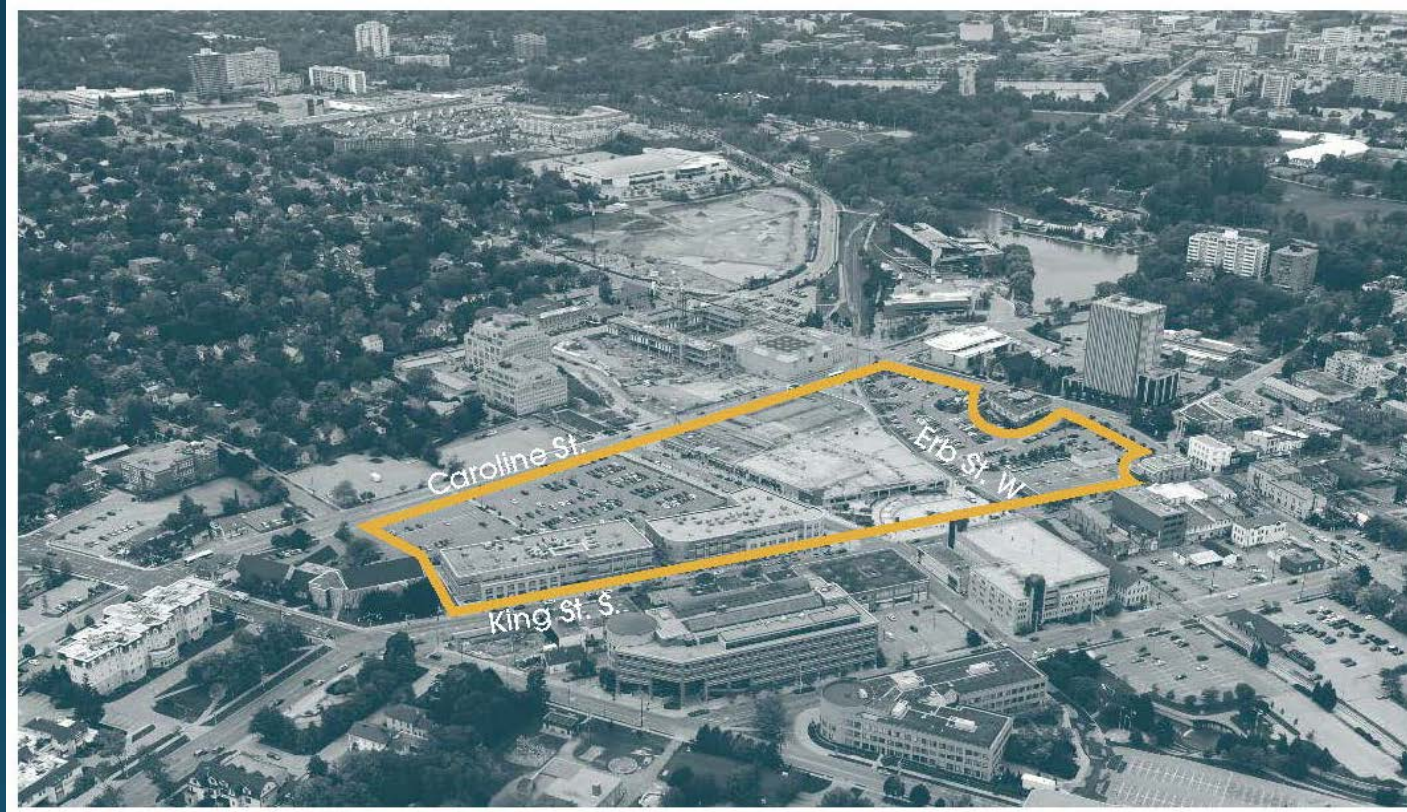


# Waterloo Region Project Profiles

 Perimeter Development Corporation

# Waterloo Town Square Redevelopment



- Suburban style mall opened in 1961
- Site is 6+ acres in the Uptown area of Waterloo
- After loss of Kmart anchor, mall went downhill...





New Retail and Office Buildings



New Public Square

- Property redeveloped to provide street grid with wide sidewalks to promote pedestrian movement thru the site
- Amended parking agreement to allow Public Square to be created

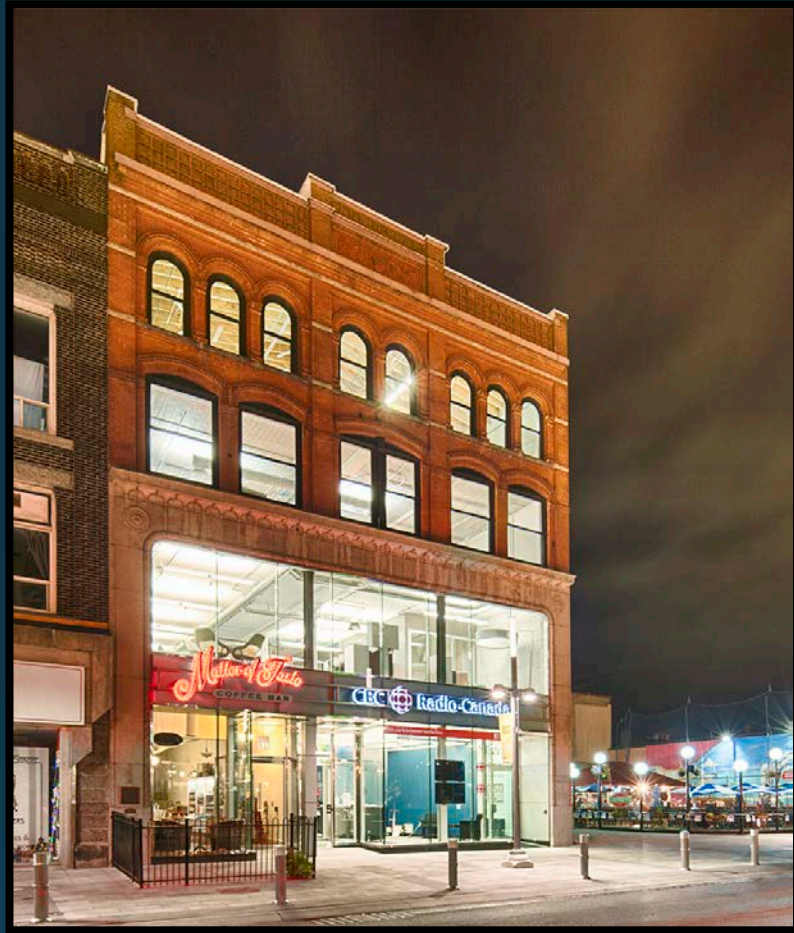


Created new city street

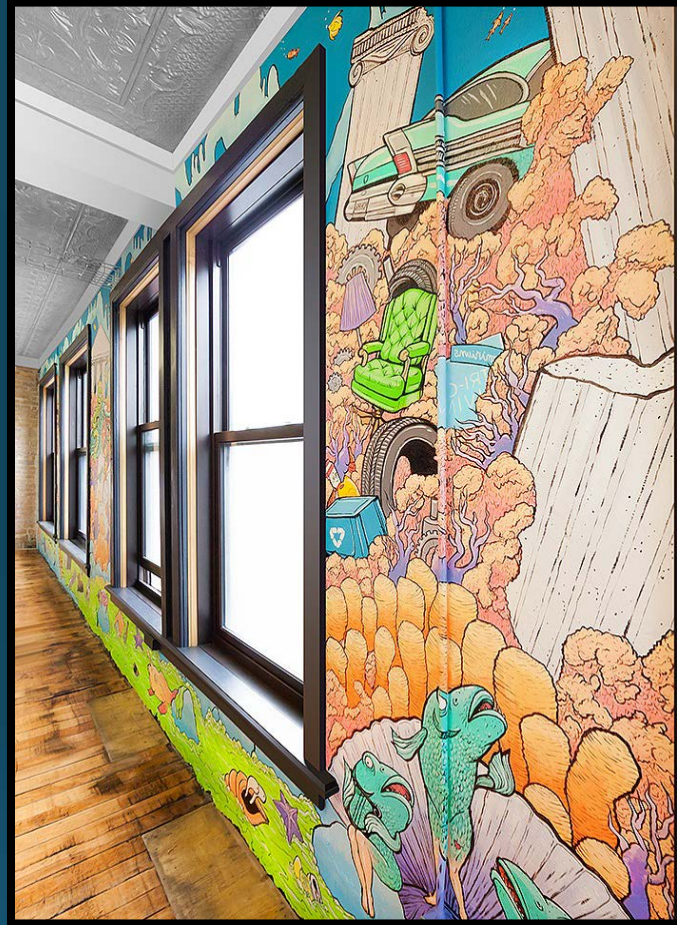
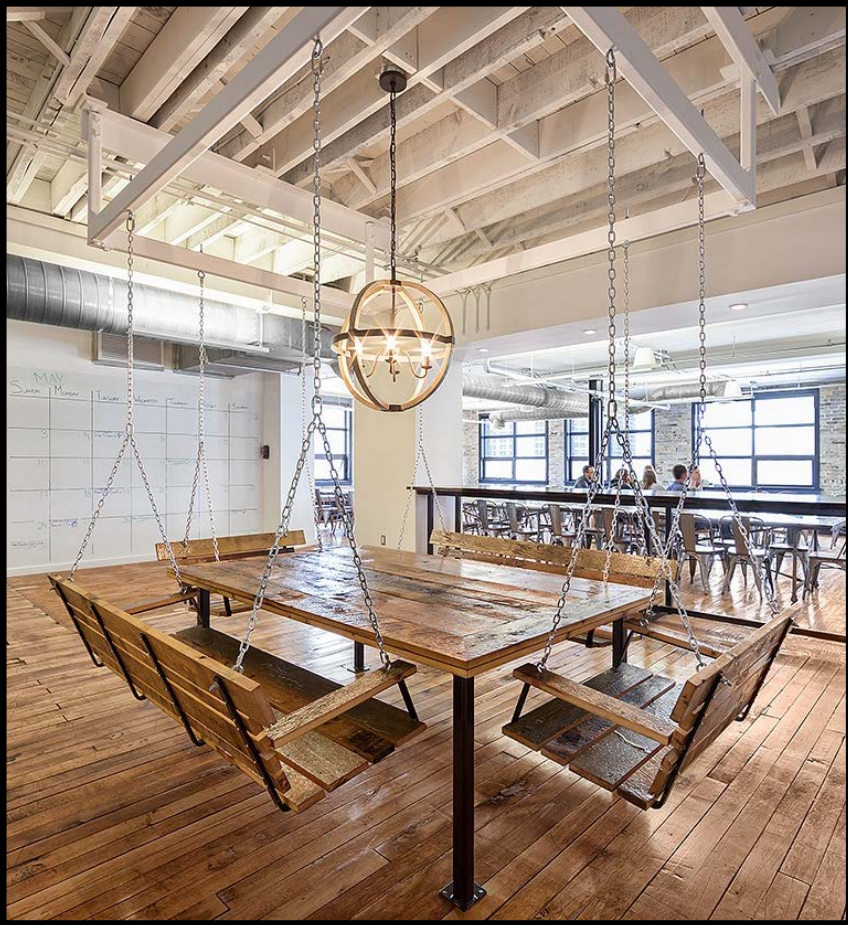
# The Simpson Block 119 King Street West



- Built in 1895, used originally for furniture retailing
- Building changed hands several times and fell into disrepair



- Full renovation undertaken in 2013 to transform building into top quality retail and office space



- Cool, unique space attracts creative companies



# The Breithaupt Block



- Former industrial facility built starting in the early 1900's
- Initially produced rubber and transformed into car part manufacturing in the 1950's



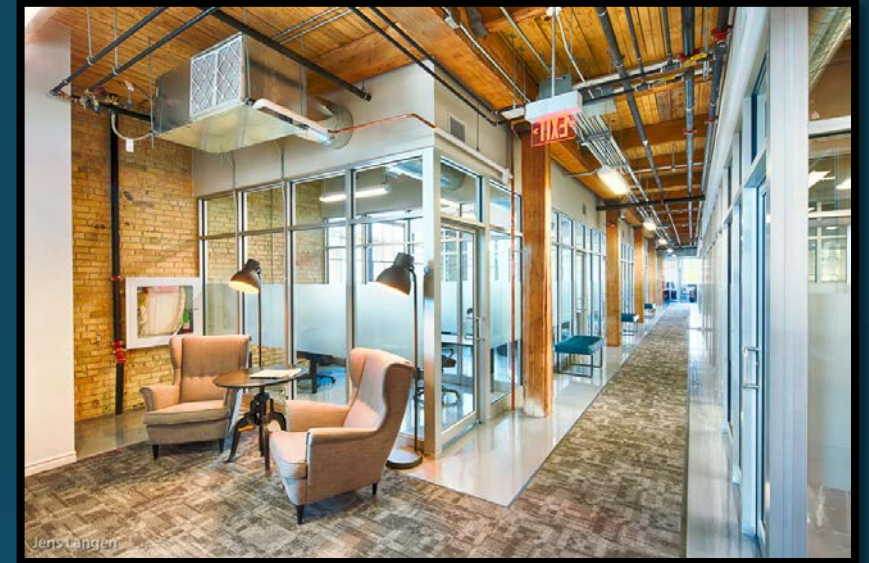
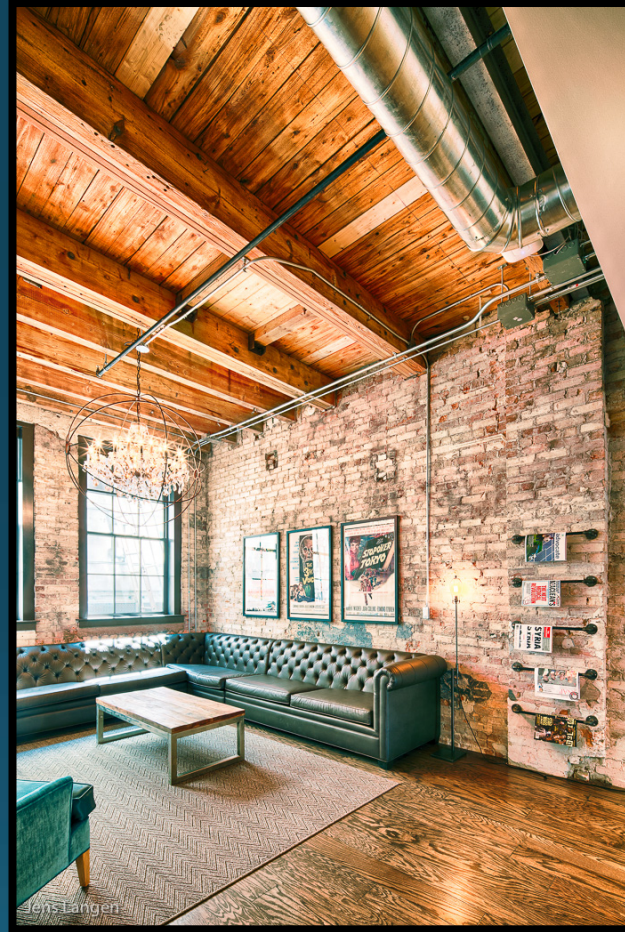
- Site is 4+ acres located near King and Victoria Streets in Kitchener
- Site originally housed approximately 225,000 sf of buildings
- Significant environmental contamination

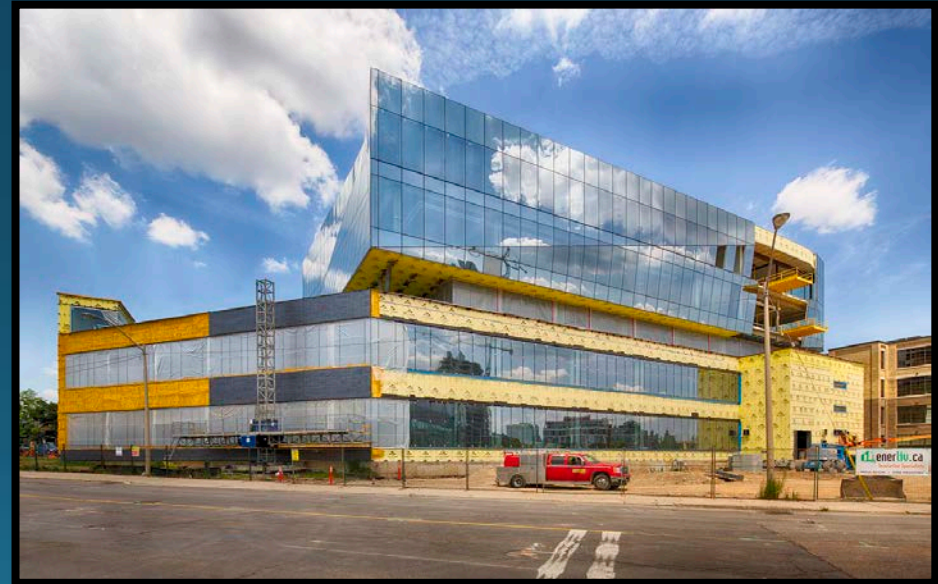


- Buildings were left with over 1,200 tonnes of old machinery



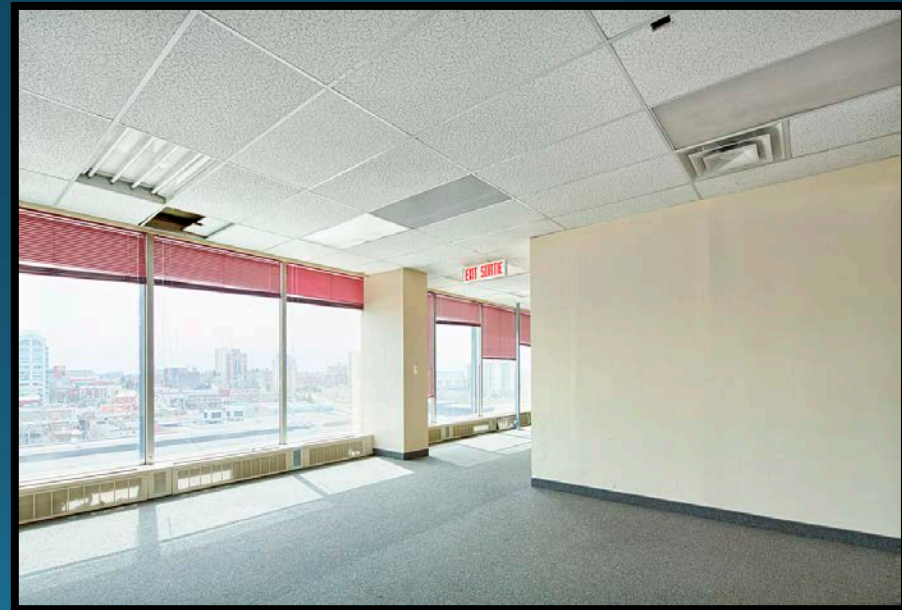






- New 50,000 sf addition added to existing 2 storey building
- Project soon to be home to Google's largest Canadian office
- Project has won REX Award and Brownie Award

# 305 KING



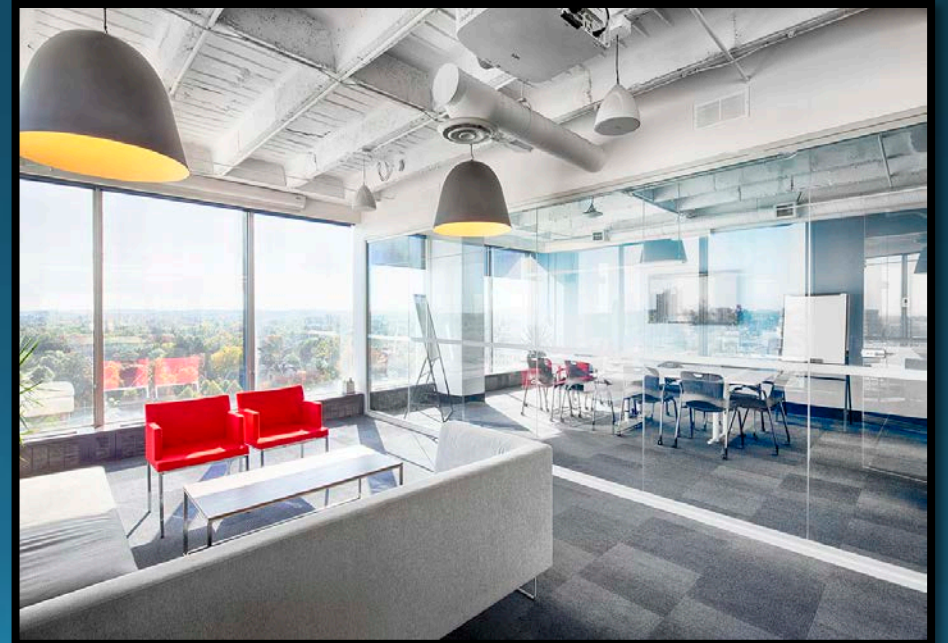
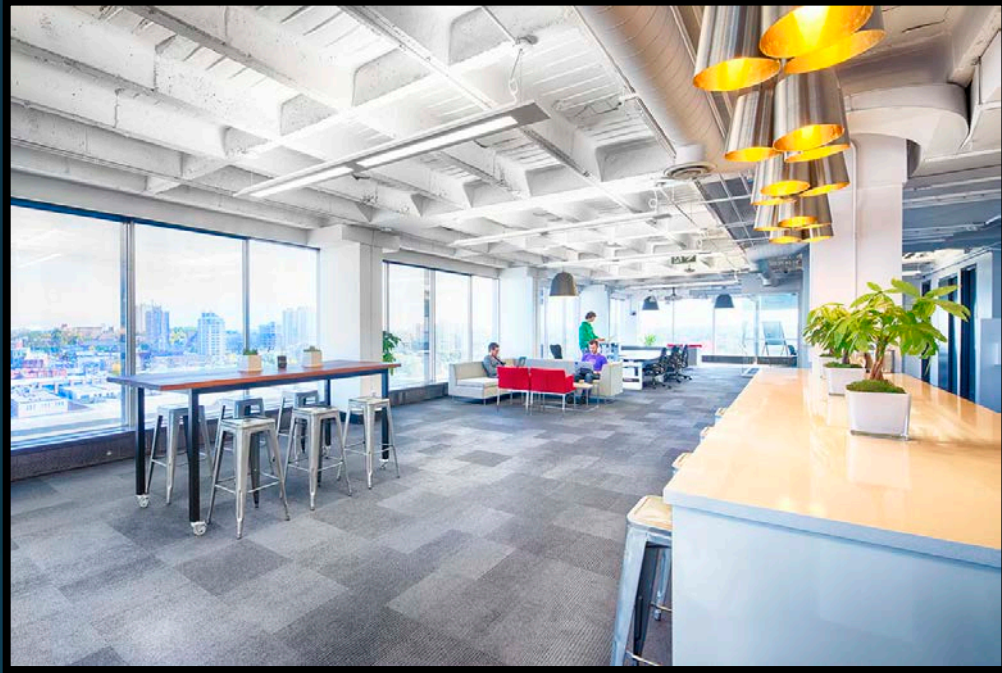
- Built in 1963, originally as banking headquarters for Truscan
- Lack of investment over the past 20 years caused building to decline
- Building was almost 70% vacant when acquired



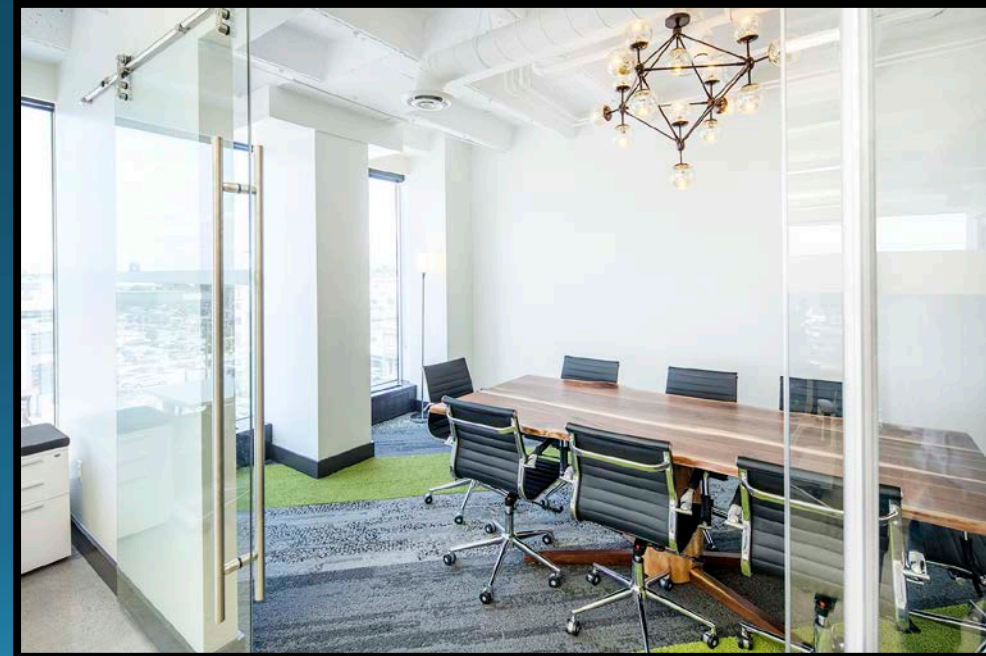
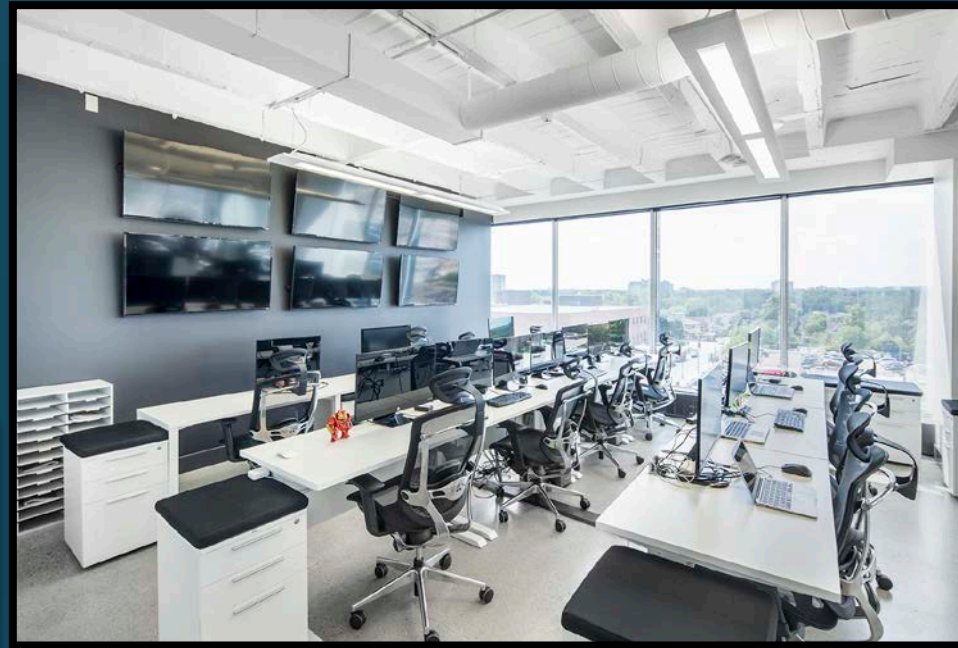


- Ground floor restaurants were re-merchandised to create excitement at grade

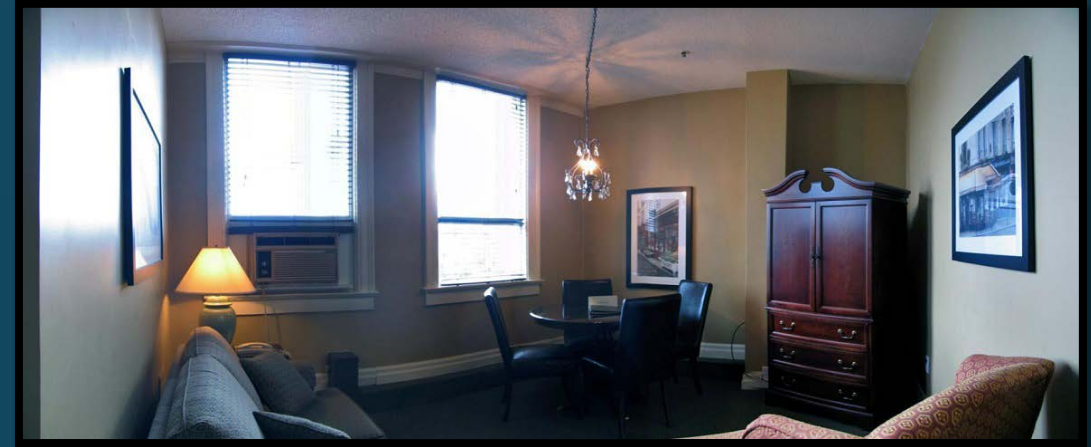




- Interior office space was gutted to create cool, new space to attract creative/tech focused companies
- Over 45,000 sf of leasing has been completed in the past 18 months



# Walper Hotel



- Iconic hotel built in 1893
- Lack of investment in the past 20 years caused building to deteriorate and performance of hotel to suffer





- Hotel will be totally renovated and reopen in June, 2016



# TWH Social Bar & Bistro



